

CU4 Humanities Homework Project

ODD ONE Out

As always, the big homework project is a chance to challenge yourself outside the classroom. You will need to use your research and analysis skills to help you find what links some of images together- and decide which one is the odd one out from the set.

Some of the sets of images will have one that is clearly different to the rest, but others might have more than one answer.

For example in the heading above, the word 'ONE' could be odd, because it is in a different **font** than the others. BUT- the word 'out' could also be odd because it is not in all capitals like the other two words.

The challenge:

- Each humanities subject has put together some groups of images. These could be people, places or events.
- You need to decide what links some of the images and decide which the odd one out from the set is.
- Some of them may seem really easy, but some of them (like the sample above) could have more than one answer!

What do I have to do?

- Choose the odd ones out from each set. It's that simple!
- The best answers will be ones that give detailed reasons and show that they understand how the pictures are linked. You will need to give evidence to support your answer.
- You may need to do research to find out about the people, places of events.

Where do I find the images?

- You can collect a printed packet from Work Room 1.
- They will be on display by the Science Lab by H12.
- They are on the school web-site.

What is the deadline?

- Monday the 5th of July
- Don't forget there are prizes for the best entries!

WHO CAN I GO TO FOR HELP?

- The Humanities faculty is here to help if you need it, but it would also be a good idea to ask your parents and guardians.

who do I hand it in to?

- Hand it in to your HUMANITIES or HOMEBASE teacher.
- Don't forget to put your name on it please!

Odd One Out

• There is at least one 'odd' one in each series.

• In some cases there are two possible solutions. Both are equally correct.

• The better your explanation about why the one you have chosen is 'odd' the more marks you will get!

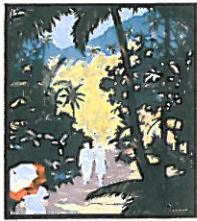
• Hand your work into your HUMANITIES teacher by Monday the 5th of July.

Set 1

California
Cuba
Canada
Chile



HINT: only one answer for this one!



Set 2

Australia
UK
Madagascar
Papua New Guinea



Australia



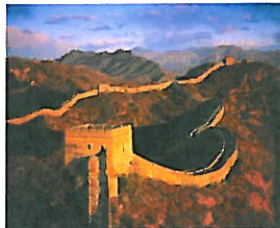
Papua New Guinea

Set 3



Gold Coast

UK
Sierra Leone
Senegal
Gold Coast



Set 4

China
India
Brazil
Kuwait



Moses

Paul

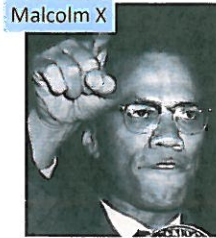
Set 5

Mohammed

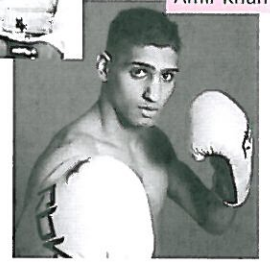
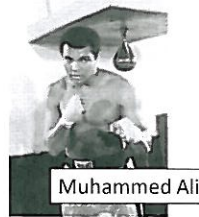
Siddhartha
Gautama



Set 6



Set 7



MARKS & SPENCER

Set 8

facebook

YouTube



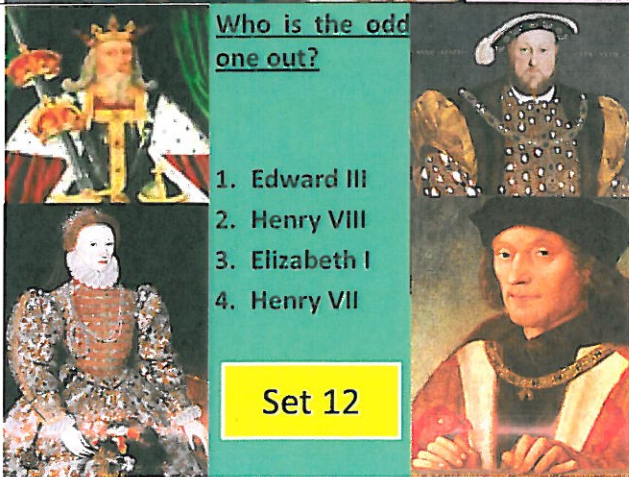
Set 9



Set 10



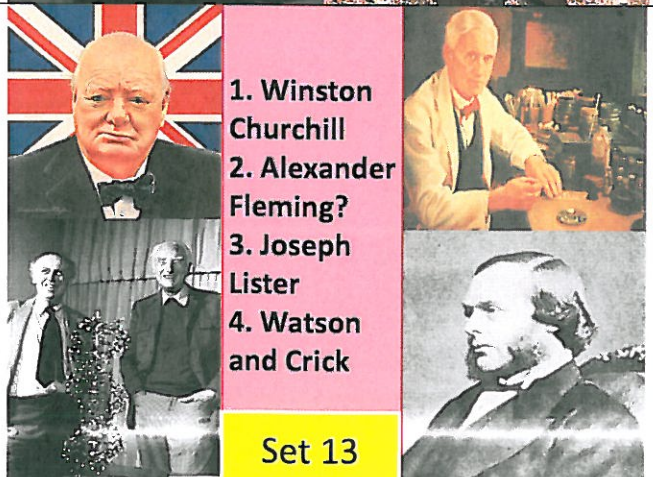
Set 11



Who is the odd one out?

- 1. Edward III
- 2. Henry VIII
- 3. Elizabeth I
- 4. Henry VII

Set 12



- 1. Winston Churchill
- 2. Alexander Fleming?
- 3. Joseph Lister
- 4. Watson and Crick

Set 13



1. Mao Zedong
2. Nikita Khrushchev
3. Ho Chi Minh
4. Joseph McCarthy

Set 14



a) Education is the passport to the future, for tomorrow belongs to those who prepare for it today.

b) I believe in human beings, and that all human beings should be respected as such, regardless of their color.

c) Darkness cannot drive out darkness; only light can do that. Hate cannot drive out hate; only love can do that.

d) The future belongs to those who prepare for it today.

Tip- can you find out who said each of these quotes?

Set 15



A. Gordon Brown



B. Tony Blair

Set 16



C. Harold Wilson



D. Ted Heath



A. Liberal Democrat Party



B. Scottish National Party

Set 17



C. Monster Raving Loony Party



D. Green Party



A. Ireland



B. Wales

Set 18



C. Scotland



D. England



A. Crown Court



B. Magistrates' Court

Set 19



C. Small Claims Court.



D. European Court of Human Rights